

# EMERALD CROWN TRAIL DATA CORRECTION AND INTERACTIVE WEB MAP DEVELOPMENT

Parker Brockman, Daniel Vasquez, Isaac Brown, Michael Henry, Chelsea Huggins

GEO 4427 GIS Consulting Practicum || Department of Geography at Texas State University || 601 University Dr, San Marcos, TX 78666 || Spring 2021

## ABSTRACT

- The Emerald Crown Trail is a proposed trail network that plans to connect cities in the Central Texas region such as San Marcos, Kyle, Buda and Austin
- This specific network will span over 98 miles in total and will eventually connect with the Violet Crown trail network located in South Austin
- The purpose is to garner attention and provide information to stakeholders for the San Marcos Greenbelt Alliance to get the proposed plans off the ground
- We will use ArcGIS Web AppBuilder to create an accessible map for the public that is interactive and easy to use

## BACKGROUND

- This project is the continuation of a project that was previously worked on by a task force group in GEO 4427 back in 2017, which was then handed down to us
- The first group's task was creating the initial rough layout of the trail, while our job was to compile the data and update the trail to make sure it's location is accurate for the safety of future hikers
- Our clients are the San Marcos Greenbelt Alliance, a non-profit trail building organization located in San Marcos, TX



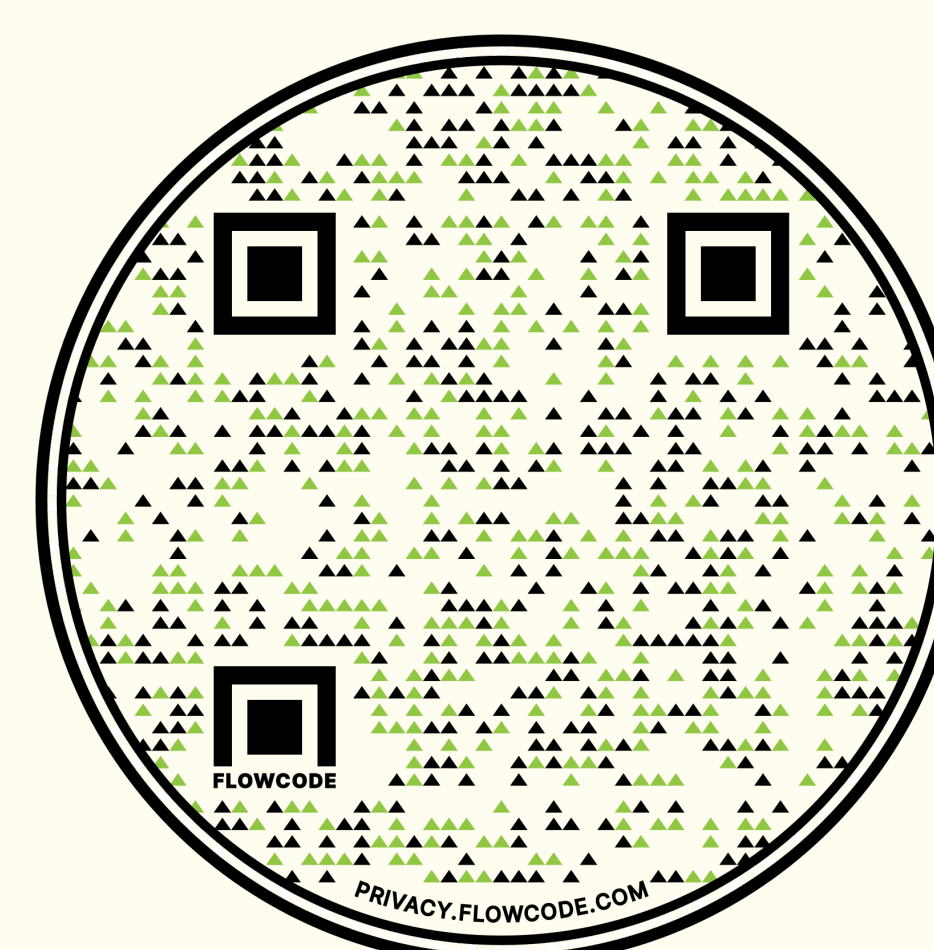
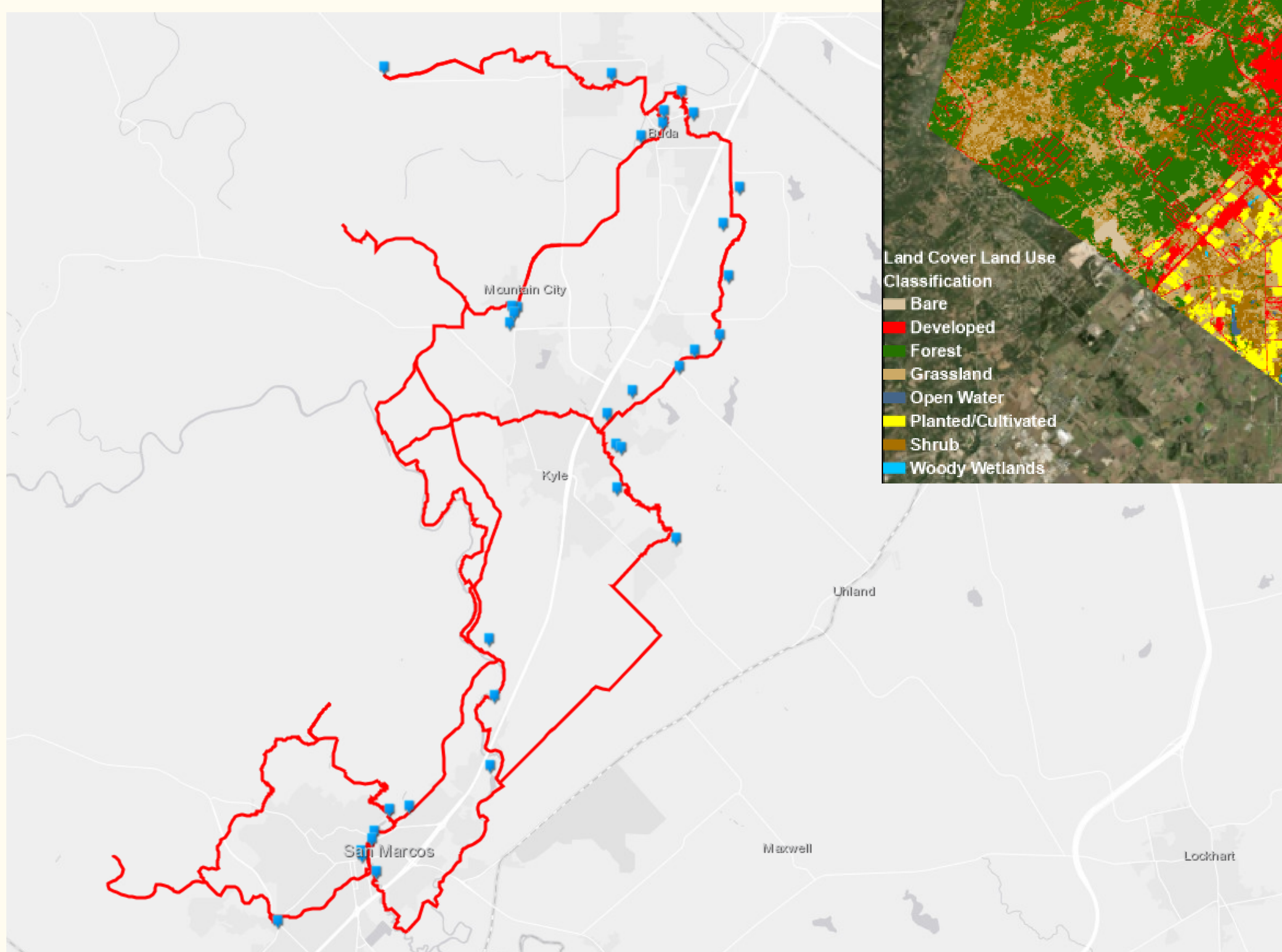
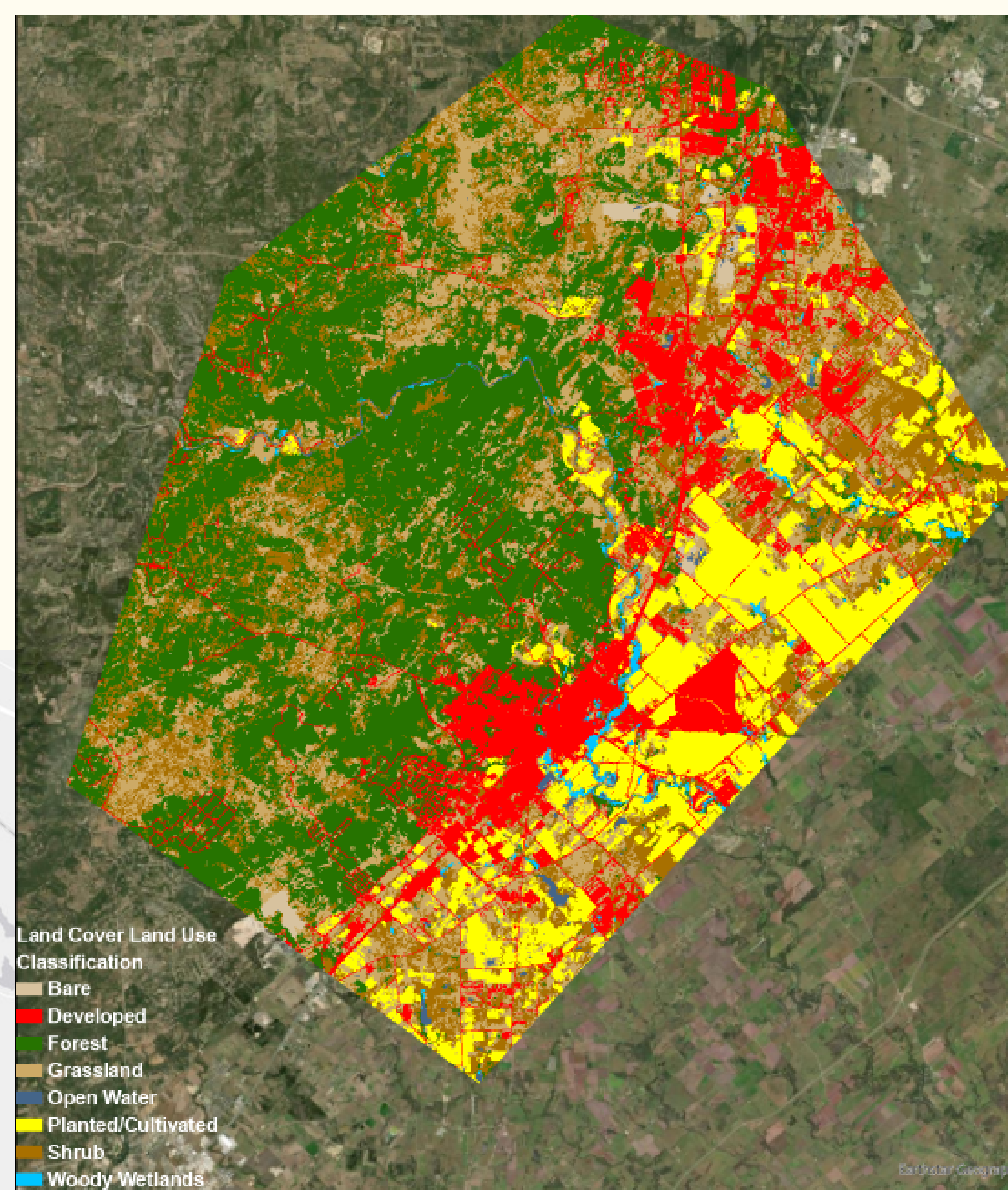
## METHODOLOGY

- Because of the nature of our project, our methods were a little different than normal. The data for our project was provided through a drop box and later, through email
- We also had to create some of the data needed for the deliverables
- Once we had all the data, we were able to assign different sections of the trail for each of us to clean up and make it look nice
- For this, we had to compile all the data and attributes needed together so we could see each of the attributes that we still needed to add
- Once we finished that, we were able to combine all the data that was cleaned up and made sure it was all connected correctly with the same attributes
- Finally we created a web map which led to the creation of the web app

## RESULTS

Our final product consists of a web app with:

- A refined Emerald Crown Trail shapefile including
  - Trail attributes with the development status
  - Trail attributes with corresponding jurisdiction
- Land Use/Land Cover data
- Proposed Access Point
- Protected Areas layer



## CONCLUSION

This project represented an opportunity to assist the San Marcos Greenbelt Alliance in refining trail segment data and creating a visual representation of the Emerald Crown Trail development status.

We hope to see further attributes added to the web map, such as data on trail grading and width. The Emerald Crown Coalition has created a framework for further in-depth analysis and web map development.

Scan the QR code in the Results section with your smart phone to see the final Emerald Crown Trail interactive web map, then plan a hike on the existing trails with friends and family!

## REFERENCES

- Ballantyne, M., & Pickering, C. (2015). The impacts of trail infrastructure on vegetation and soils: Current literature and future directions. <https://www.sciencedirect.com/science/article/pii/S030147971530236X>
- Judge, S., & Harrie, L. (2020, April 27). Visualizing a Possible Future: Map Guidelines for a 3D Detailed Development Plan. Retrieved from <https://link.springer.com/article/10.1007/s41651-020-00049-4>
- Styskel, E. (2016). *Trail Building 101 Part 1: Trail Planning and Design*. Retrieved from <https://www.wafarmforestry.com/sites/default/files/pdfs/TrailBuilding101%20v20161217ED.pdf>
- T.D.E.C. (2007, March). *Pathways to Trail Building*. American Trails.Org. <https://www.americantrails.org/images/documents/TNpathways.pdf>

**Acknowledgements:** Thank you to the Department of Geography at Texas State and Dr. Yuan for making this class possible. Special thank you to the San Marcos Greenbelt Alliance for allowing us to help them with this amazing project, especially to Mark Taylor for being there throughout the whole semester as our main point of contact.

